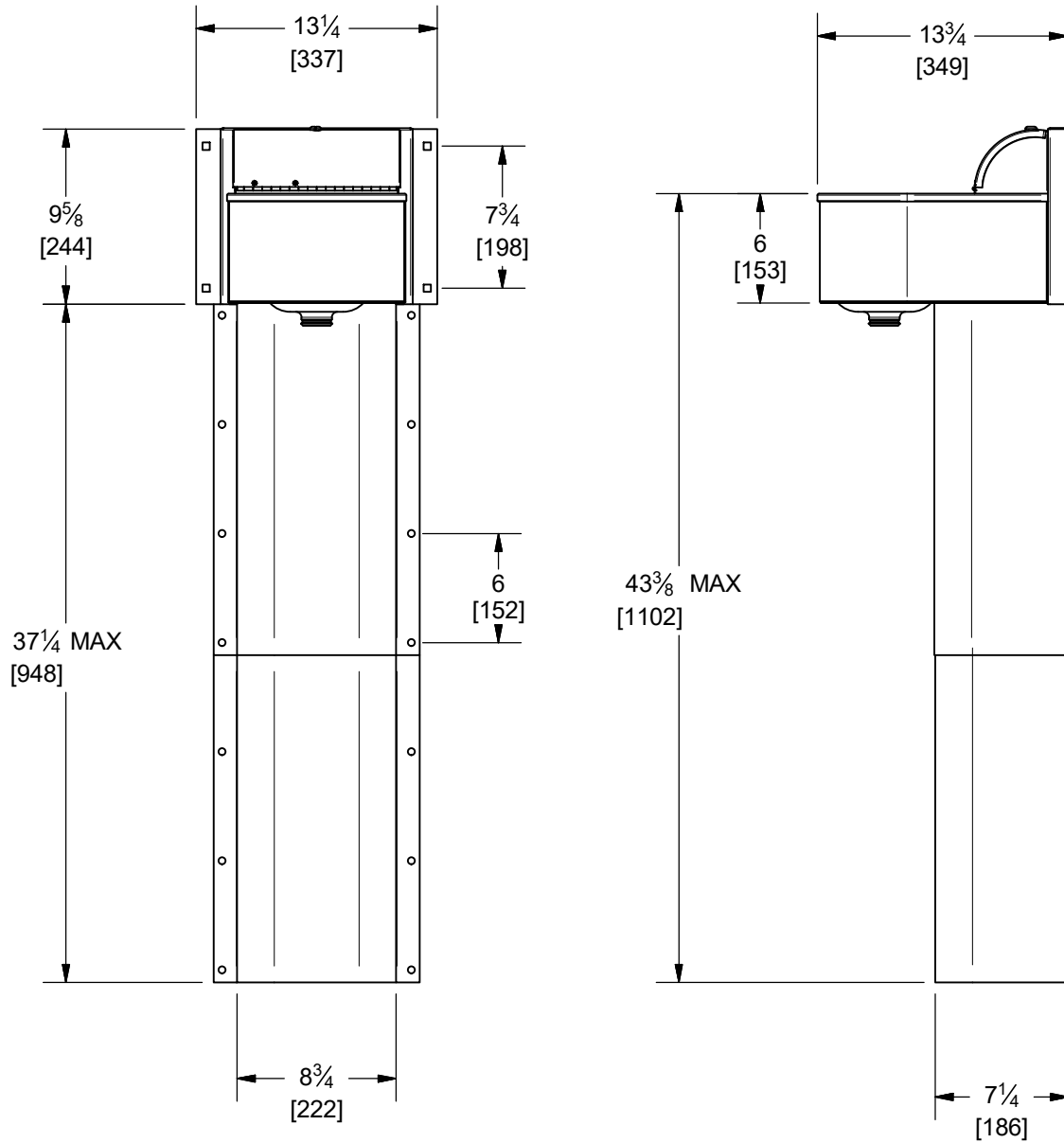


STALLFOUNT WALL MOUNT

OVERALL DIMENSIONS

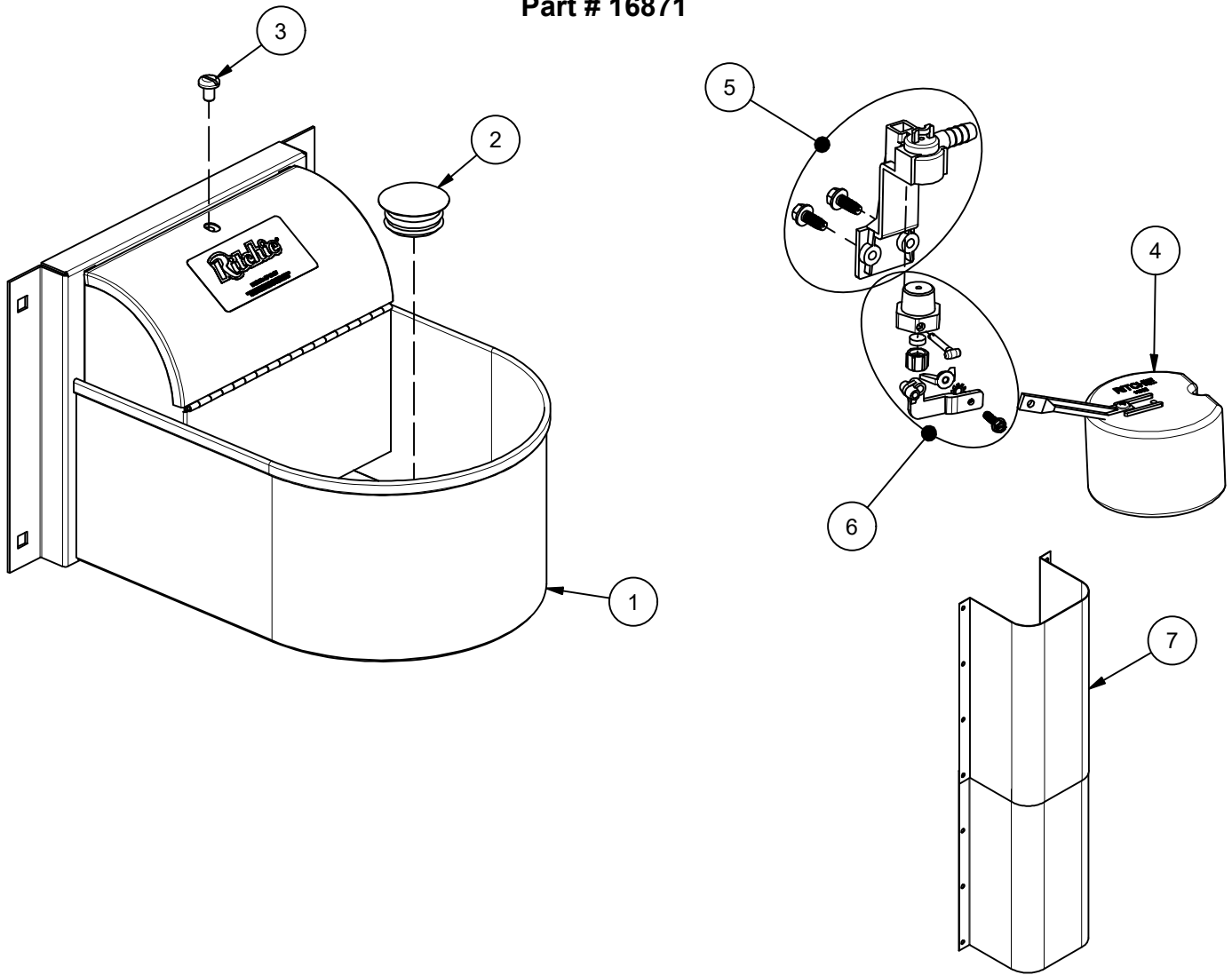


NOTE:

SHROUD HEIGHT CHANGES CAN BE MADE IN 6" INCREMENTS.
 IT IS NOT RECOMMENDED TO USE THIS DRAWING FOR LOCATING WALL ANCHORS.
 IT IS RECOMMENDED TO WAIT UNTIL UNIT IS AVAILABLE FOR MEASUREMENT.

StallFount

Part # 16871



| Item | Part # | Description | Qty | Item | Part # | Description | Qty |
|------|--------|----------------------------|-------|------|--------|-----------------------|-------|
| 1 | 16877 | SF Trough Complete | 1 | 6 | 13597 | Green Valve 1/2" pkg | 1 pkg |
| 2 | 18876 | SF Trough Plug | 1 | 7 | 18092 | Shroud Set Optional. | 1 pkg |
| 3 | 18080 | SF Cover Screw (6/pkg) | 1 pkg | NS | 15931 | Hose Clamp SS (5/pkg) | 1 pkg |
| 4 | 13613 | Float with Short Arm pkg | 1 pkg | NS | 18228 | SF Accessory pkg | 1 pkg |
| 5 | 11515 | Valve Bracket w/ screw pkg | 1 pkg | | | | |

Installation Variations

A stainless steel shroud may be purchased to protect the waterline between the floor and the Ritchie Stall Fount. Part number 18092 includes two sections of shroud, 19 ³/₄ inches long. This part is not required for the non-electric Stall Fount.

Installing the shroud - After the plumbing connections are made, install the optional shroud using 1/4" lag screws or bolts. When more than one section of shroud is used, the total length of the shroud can be adjusted in 6" increments by removing insulation as needed and moving top shroud down to align next set of holes.