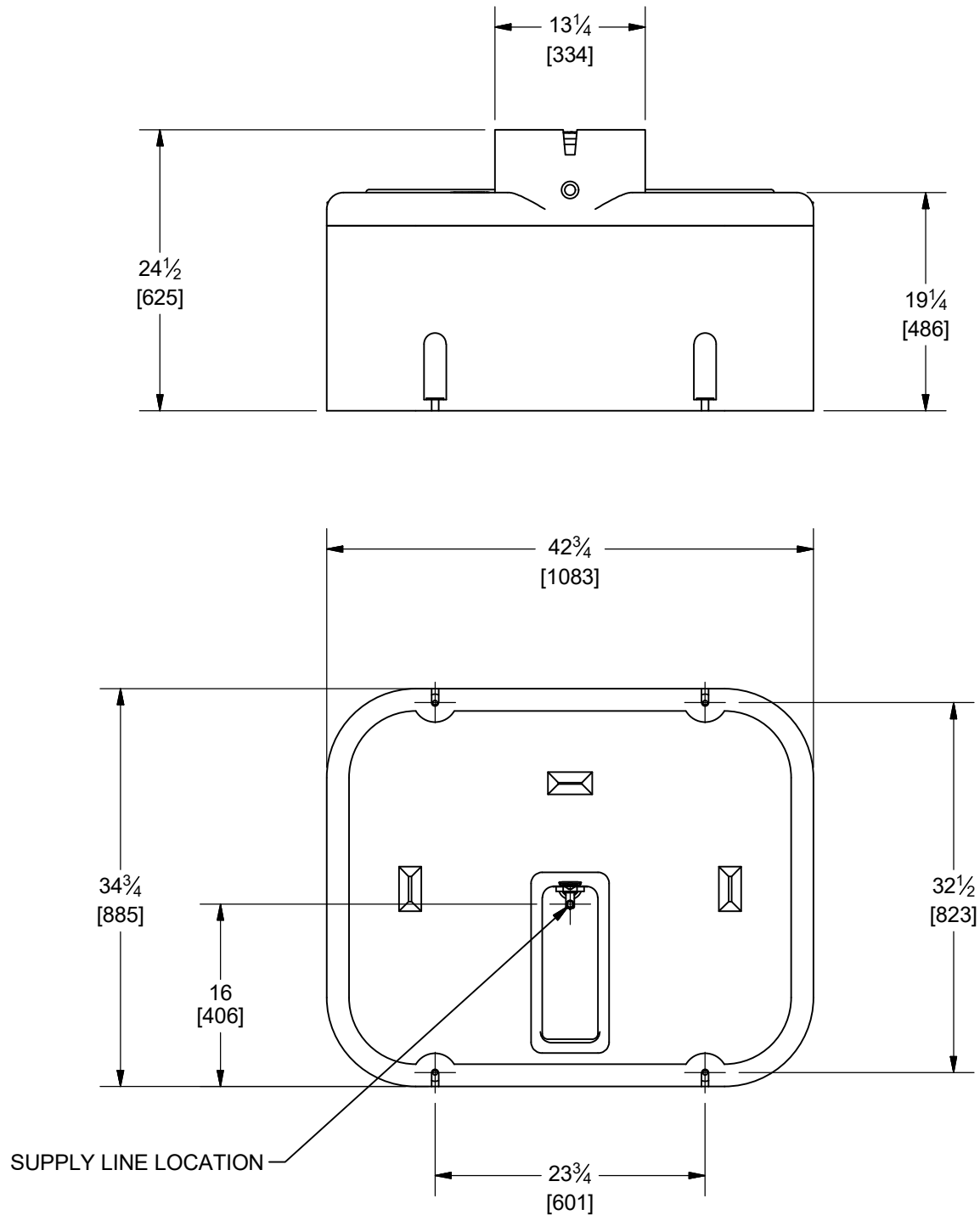


THRIFTY KING CT 4

OVERALL DIMENSIONS

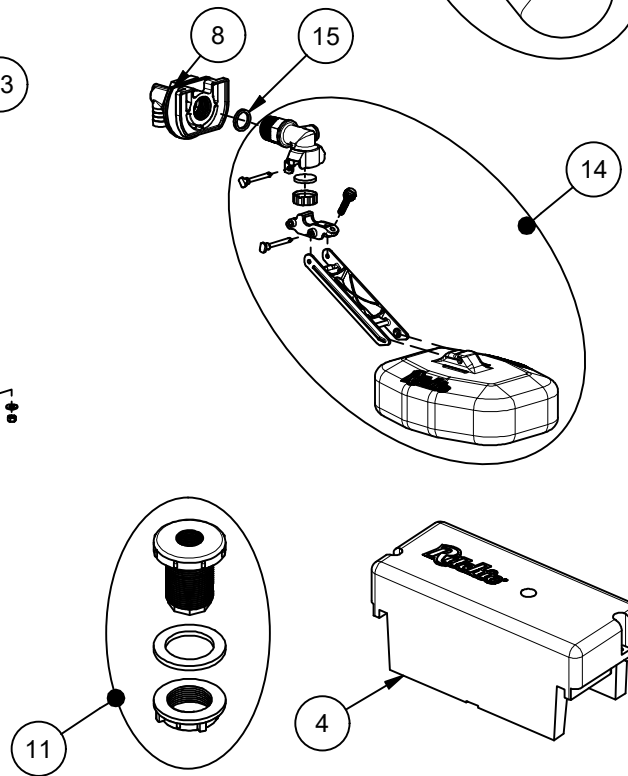
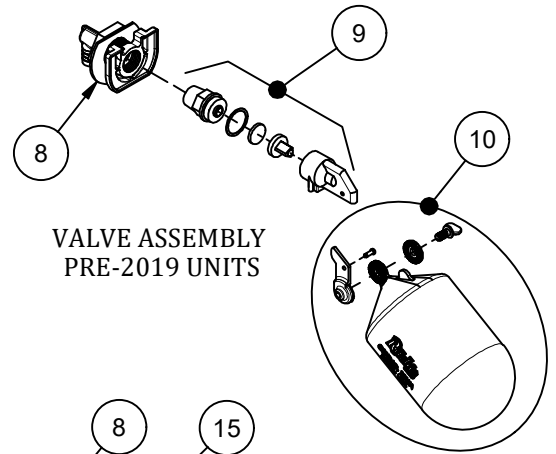
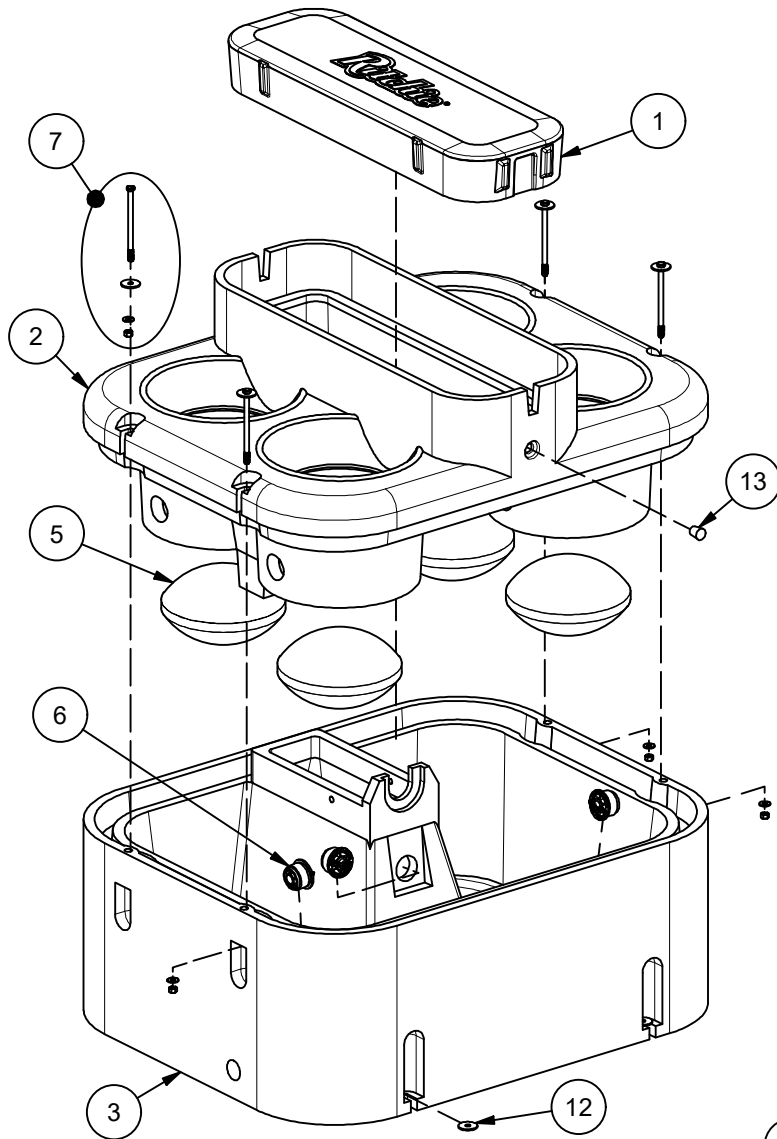


NOTE:

MOUNTING HOLE LOCATIONS ARE APPROXIMATE. DUE TO VARIATIONS IN MOLDING PROCESS, IT IS NOT RECOMMENDED TO USE THIS DRAWING FOR LOCATING CONCRETE ANCHORS. IT IS RECOMMENDED TO WAIT UNTIL UNIT IS AVAILABLE FOR MEASUREMENT.

Thrifty King CT4-2000

Part # 16430



Item	Part #	Description	Qty	Item	Part #	Description	Qty
1	18121	Thrifty King CT4 Cover	1	11	18624	Optional Non-Potable Vlv Adptr	1 pkg
2	18120	Thrifty King CT4 Top	1	12	18318	Bolt Down Washer (4/pkg)	1 pkg
3	18119	Thrifty King CT4 Base	1	13	18633	Plug #3 - Water Channel	1 pkg
4	18090	Optional TK CT Summer Cover	1	14	18832	HP 3/4" Valve Assembly	1
5	16305	Elliptical Closures	4	15	18475	O-Ring Valve Seal Pkg (4/pkg)	1
6	18849	Ritchie 2" Plug pkg	3 pkgs	NS	14866	Seal Foam 10' Roll	2
7	16538	Top Bolt, Wshr, & Nut (2/pkg)	2 pkgs	NS	14859	Pipe Insulation	1
8	18838	VLV HP Brkt Assy pkg	1 pkg	NS	15931	Hose Clamp SS (5/pkg)	1 pkg
9	15377	Green Valve 3/4" Male pkg	1 pkg	NS	18614	Adapter 3/4" x 5/8" HB	1 pkg
10	18314	Float with Hardware pkg	1 pkg	NS	18155	TK CT 4 Accessory pkg	1 pkg
	18313	Hardware for Float pkg	1 pkg	NS	16646	Opt. Ribbed Elliptical Closures	4