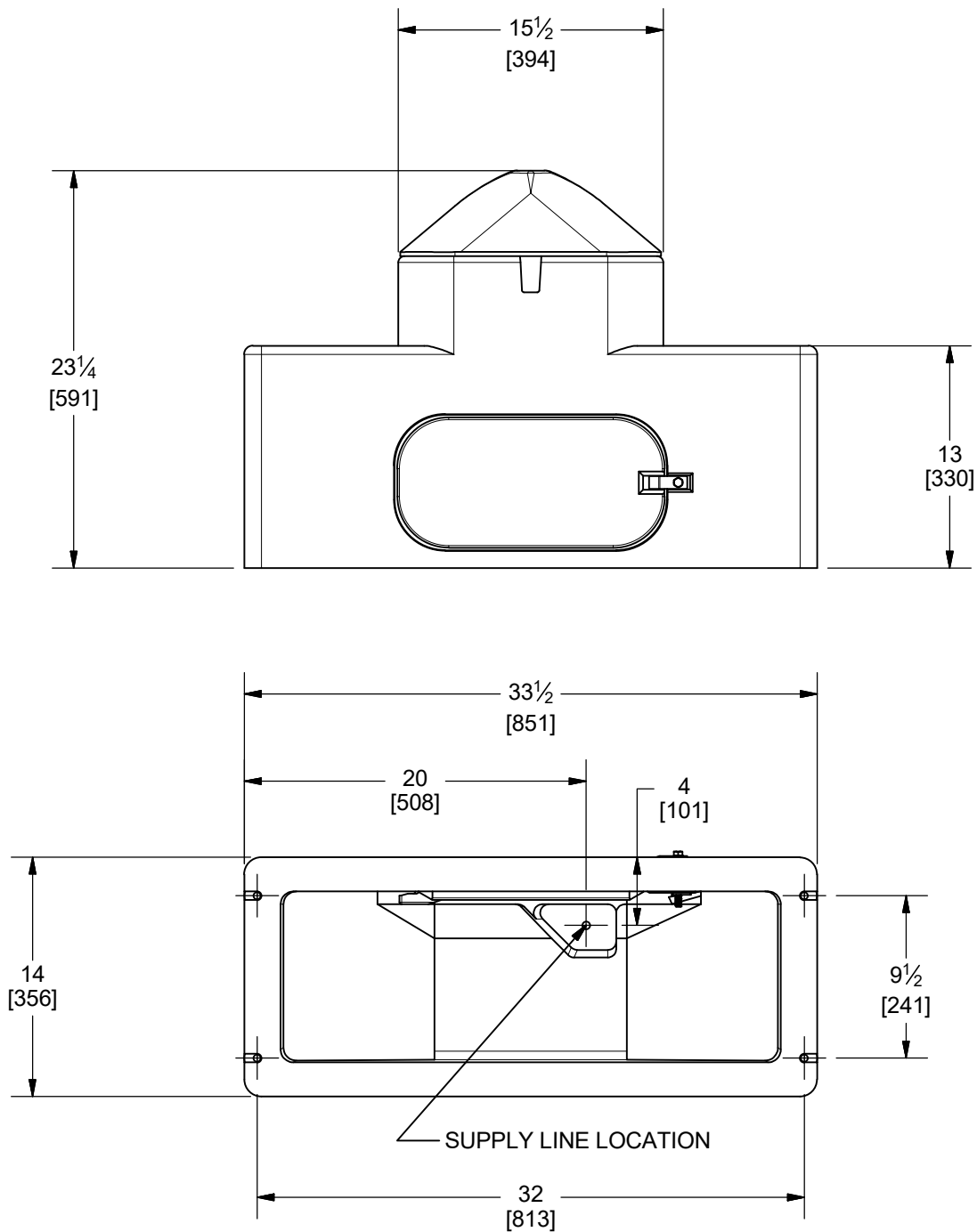


# WATERMATIC 150S

## OVERALL DIMENSIONS

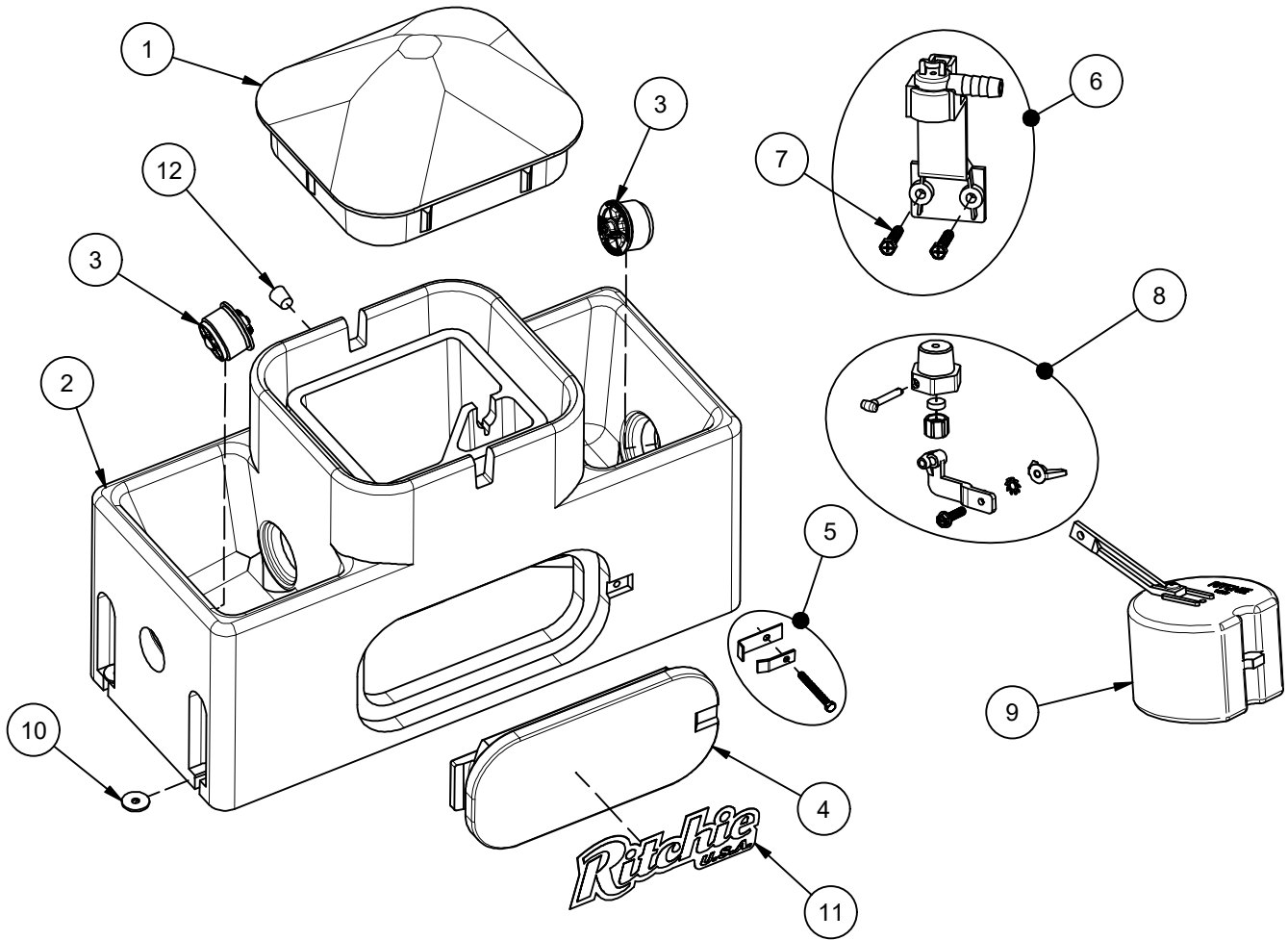


### **NOTE:**

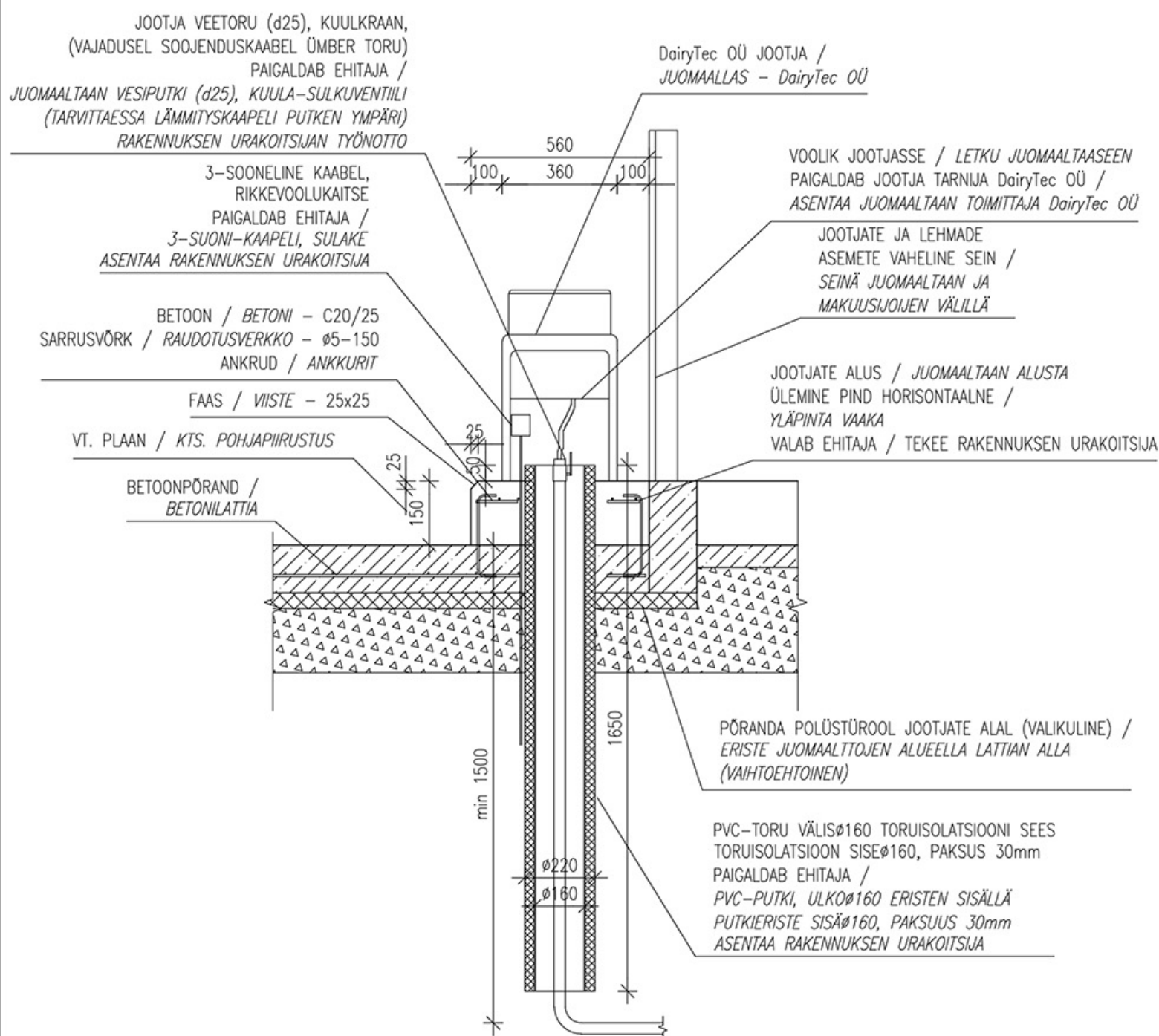
MOUNTING HOLE LOCATIONS ARE APPROXIMATE. DUE TO VARIATIONS IN MOLDING PROCESS, IT IS NOT RECOMMENDED TO USE THIS DRAWING FOR LOCATING CONCRETE ANCHORS. IT IS RECOMMENDED TO WAIT UNTIL UNIT IS AVAILABLE FOR MEASUREMENT.

# WaterMatic 150S

Part # 18222



Item	Part #	Description	Qty	Item	Part #	Description	Qty
1	18223	WaterMatic 150S Cover	1	9	13613	Float with Short Arm pkg	1 pkg
2	18224	WaterMatic 150S Base	1	10	18318	Bolt Down Washer (4/pkg)	1 pkg
3	18470	Drain Plug Ritchie 3"	2 pkgs	11	18653	Ritchie Decal 12" (1/pkg)	1 pkg
4	16621	Access Panel 6"x14"	1	12	18633	Plug #3 - Water Channel (2/pkg)	1 pkg
5	18147	Access Panel Hardware pkg	1 pkg	NS	14866	Seal Foam 10' Roll	1
6	11515	Valve Bracket w/ screw pkg	1 pkg	NS	15931	Hose Clamp SS (5/pkg)	1 pkg
7	18709	Screw Valve Mount (4/pkg)	1 pkg	NS	18613	Adapter 1/2" x 3/8" HB	1 pkg
8	12575	Red Valve 1/2" pkg	1 pkg	NS	18187	WMatic Small Accessory pkg	1 pkg



# JOOTJA TÜÜPLÕIGE / JUOMAALTAAN TYYPPILEIKKAUS WM 100, WM 150, WM 150S M:1:20

Tarnimine ja paigaldus / Toimitus ja asennus: DAIRYTEC OÜ

Projekteerija / Suunnittelu: Inseneribüroo PÜLOON OÜ

Joonis Nr. / Piirustus No. : 27