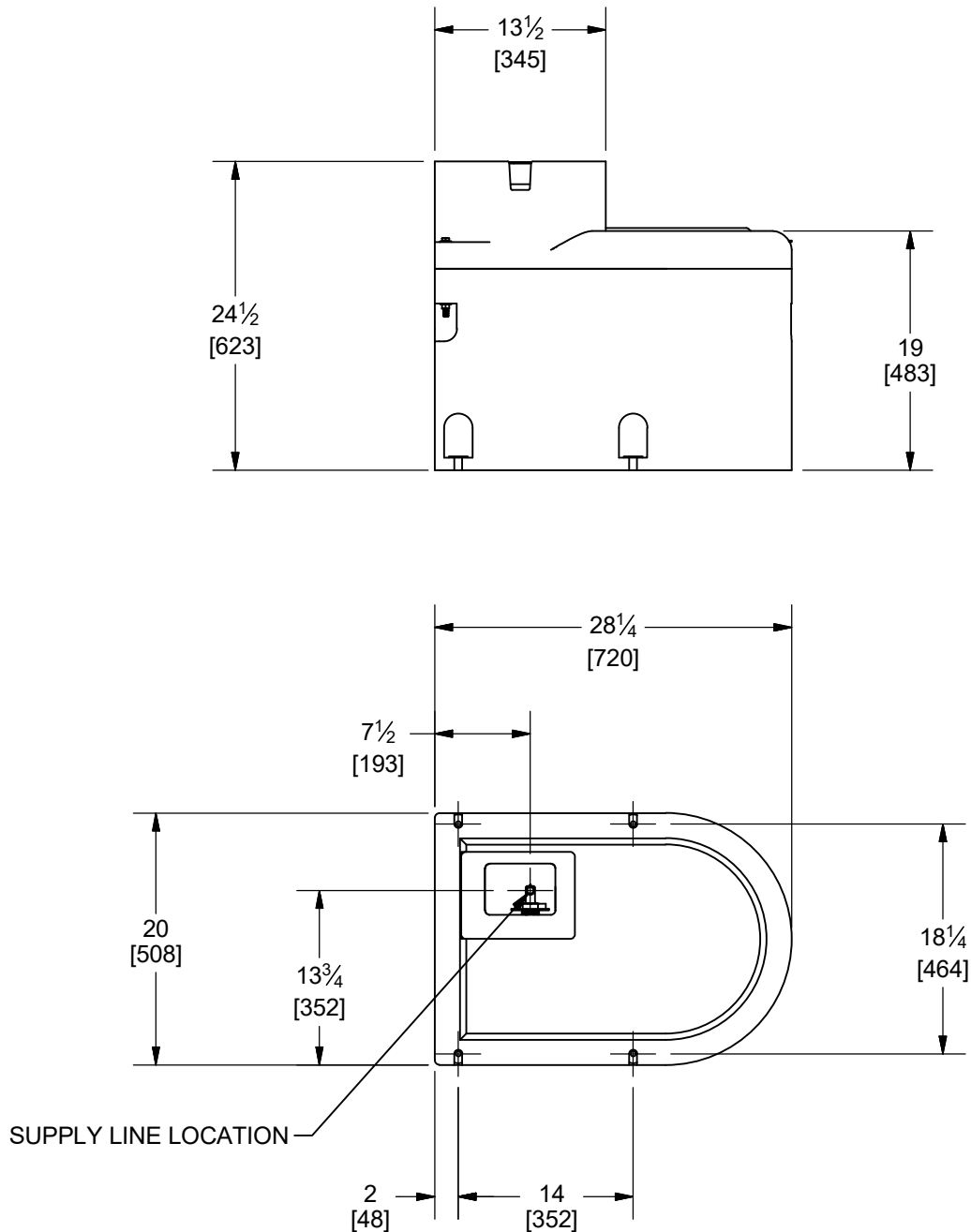


# THRIFTY KING CT 1

## OVERALL DIMENSIONS

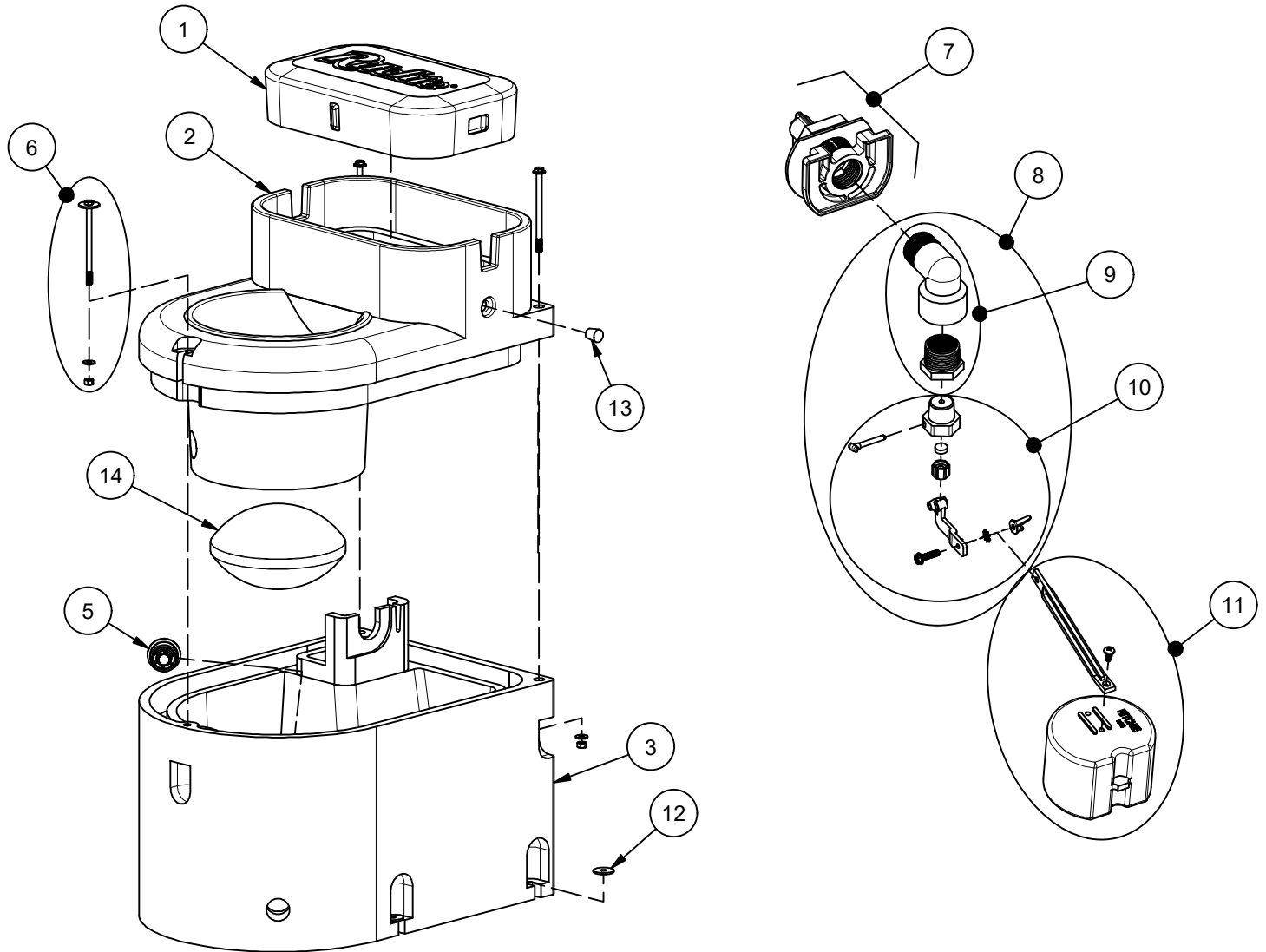


### **NOTE:**

MOUNTING HOLE LOCATIONS ARE APPROXIMATE. DUE TO VARIATIONS IN MOLDING PROCESS, IT IS NOT RECOMMENDED TO USE THIS DRAWING FOR LOCATING CONCRETE ANCHORS. IT IS RECOMMENDED TO WAIT UNTIL UNIT IS AVAILABLE FOR MEASUREMENT.

# Thrifty King CT1-2000

Part # 16271



Item	Part #	Description	Qty	Item	Part #	Description	Qty
1	16861	Thrifty King CT1 Cover	1	10	12575	Red Valve 1/2" Male pkg	1 pkg
2	16860	Thrifty King CT1 Top	1	11	12836	Float with Long Arm pkg	1 pkg
3	16859	Thrifty King CT1 Base	1	12	18318	Bolt Down Washer (4/pkg)	1 pkg
4	16305	Elliptical Closures	1	13	18633	Plug #3 - Water Channel	1 pkg
5	18849	Ritchie 2" Plug pkg	1 pkg	NS	14866	Seal Foam 10' Roll	1
6	16538	Top Bolt, Wshr, & Nut (2/pkg)	2 pkgs	NS	14859	Pipe Insulation	1
7	18838	VLV HP Brkt Assy pkg	1 pkg	NS	18614	Adapter 3/4" x 5/8" HB	1 pkg
8	16899	Valve 1/2" White W/ Adpt pkg	1 pkg	NS	16857	TK CT1 Accessory pkg	1 pkg
	18692	Valve 1/2" Red W/ Adpt pkg	1 pkg	NS	16646	Opt. Ribbed Elliptical Closures	1
9	16287	Adptr Reducer 3/4" to 1/2" pkg	1 pkg				